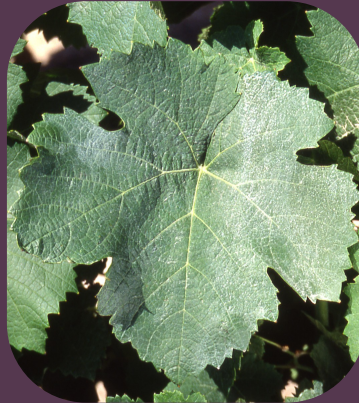


Fer N

Wine grape variety.



Origin

This variety from the south west of France could originally be from the Gironde.

Use

Wine grape variety.

Name of the variety in France

Fer

Synonymy

In France, this variety can officially be called "Braucol", "Fer servadou", "Mansois" or "Pinenc" regarding plant propagation material.

Regulatory data

In France, Fer is officially listed in the "Catalogue of vine varieties" on the A list and classified.

Description elements

The identification is based on:

- the green young leaves with bronze spots,
- the small or medium adult leaves, with five lobes, shallow lateral sinuses, a slightly open petiole sinus, short teeth, no anthocyanin coloration of veins, a twisted leaf blade, and on the lower side of the leaves, a low density of erect and prostrate hairs,
- the round-shaped berries, with a herbaceous flavor.

Evolution of cultivated areas in France

Year ha

1958952

1968978

1979319

1988494

19981248

20081679

20181584

Genetic profile

Microsatellite	VVS2	VVMD5	VVMD7	VVMD27	VRZAG62	VRZAG79	VVMD25	VVMD28	VVMD32
Allele 1	137	223	239	182	188	246	238	227	239
Allele 2	149	236	249	186	200	252	248	247	271

Cultivation and agronomic skills

This variety can be irregularly fertile and must be pruned long. Frequently a substantial part of the buds do not burst. The clusters keep well on the vine trunk and have peduncle which lignifies.

Susceptibility to Diseases and Pests

Fer usually has a good resistance to grey rot. This variety is also not very sensitive to downy mildew, but is it is susceptible to vine leafhoppers.

Clonal selection in France

The ten certified Fer clones carry the numbers 420, 421, 556, 557, 628, 670, 671, 672, 895 and 1347.

Two conservatories with a total of 120 clones are planted in the win-growing region of Gaillac (French department of Tarn) and in the French department of Aveyron.

Bibliographic references

- Catalogue des variétés et clones de vigne cultivés en France. Collectif, 2007, Ed. IFV, Le Grau-du-Roi, France.
- Documentary collections of the Centre de Ressources Biologiques de la Vigne de Vassal-Montpellier, INRAE - Institut Agro | Montpellier, Marseillan, France.
- Dictionnaire encyclopédique des cépages et de leurs synonymes. P. Galet, 2015, Ed. Libre&Solidaire, France.
- Traité général de viticulture, Ampélographie. P. Viala and V. Vermorel, 1901-1909, Ed. Masson, Paris, France.

Phenology

Bud burst: 6 days after Chasselas.

Grape maturity: mid-season, 3 weeks and a half after Chasselas.

Technological potential

The bunches are medium in size and compact while the berries are small to medium in size. Fer produces lively wines, moderately colored but rather tannic and rustic with typical (wild) aromas. When the grapes have reached maturity, if the yields are managed, Fer's aromas are fruity (blackcurrant, red berries).



*Plantgrape, all rights reserved,
plantgrape.com, © UMT Géno-Vigne®
INRA - IFV - L'Institut Agro Montpellier*